

**MAXCESS®**  
BETTER, FASTER, SMARTER



**WEBEX**



## MAXCESS WEB-HANDLING SOLUTIONS

Rotary Dies and Support Tooling, Guiding, Vision Systems, Winding, Slitting,  
Tension Control and Precision Rolls

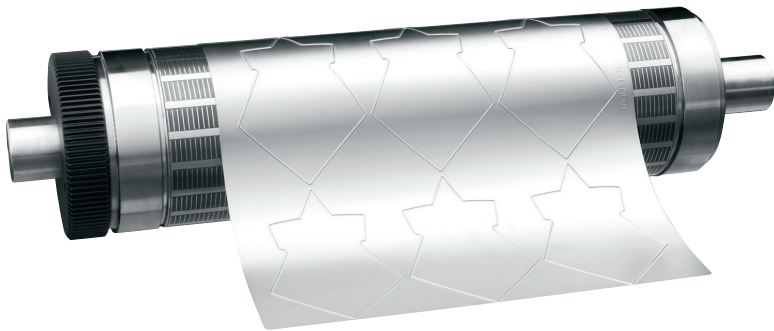
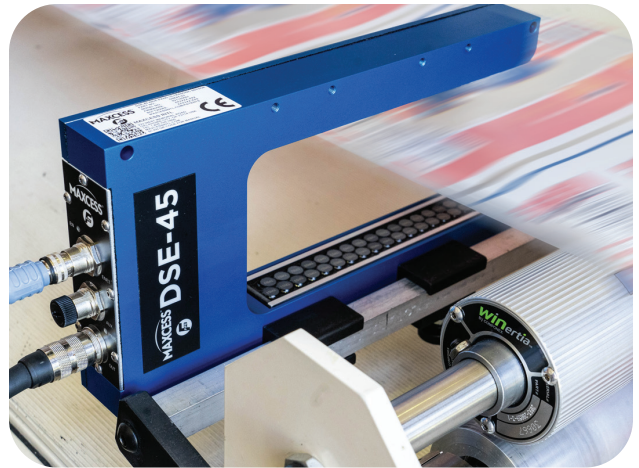
**MAXCESS**

## Our Experts Keep You Running Better, Faster and Smarter

Maxcess® saves you time and money by optimizing and automating your converting line. We do this by leveraging the world's best web handling brands, offering customized end-to-end web handling solutions that help you work better, faster and smarter.

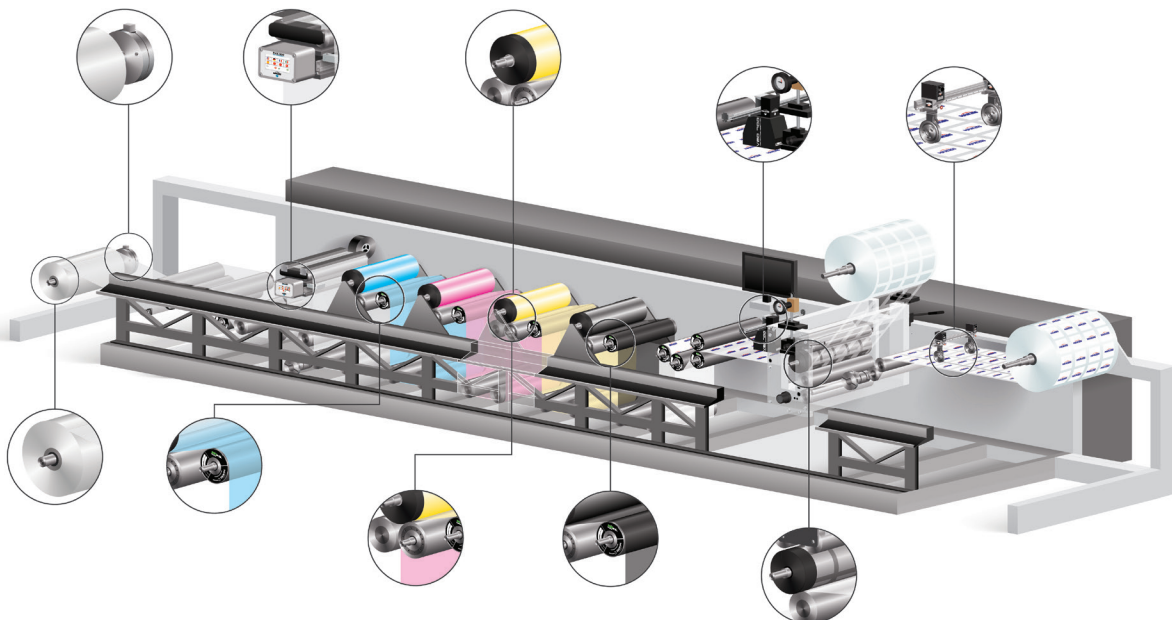
We manufacture all of our components to meet the highest standard of precision, with deep application knowledge behind how each component works better together across your converting line. All to provide unmatched product integration, automation and precise positioning from unwind to rewind.

We're Maxcess. We provide solutions that help you run better, faster and smarter.



### Global Maxcess Presence

Having a global presence means more than a responsive, convenient sales presence. It also means vertical integration with local manufacturing and service locations throughout North America, South America, Europe, Asia and Australia. This allows us to offer unrivaled value worldwide, with the ability for you to have local contact with Maxcess no matter where you are. With a combined 400 years of knowledge between our brands, nobody can match our expertise in web handling applications, installation, innovation or customization.

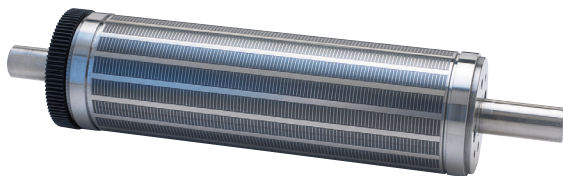
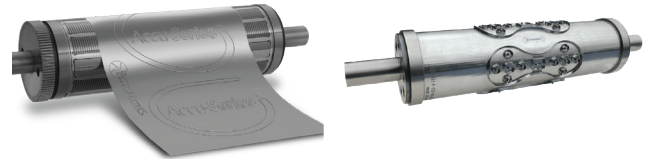




Unlock the Power of Precision. Now Featuring RotoRepel™

### Flexible and Solid Dies

Our flexible and solid die portfolio allows you to choose the product features that are most important to you. Every time. For many layouts, same day turnaround is available. Whether short run jobs, digital applications, abrasive materials, or thin film applications, we have a solution for all your die cutting requirements that works right out of the box.



### Magnetic Cylinders

The **AccuBase™ XT** with through-hardened D2 journals and bearers plus industry leading dimensional stability offers the tightest tolerances for increased accuracy and extended service life on every job. The **AccuBase™** magnetic cylinder is precision engineered with an industry-leading price-to-performance ratio.

### Print Cylinders

Manufactured to exacting requirements, our print cylinders ensure the greatest accuracy and consistency. Available with ground gears for superior print quality.

**Standard cylinders** have the fastest turnaround times and offer maintenance-free performance at an affordable price

**RotoGuard™ and RotoGuard™ XT cylinders** have enhanced proprietary surface protection from scratches and corrosion. Anodized in-house, ensuring consistency and increased life.



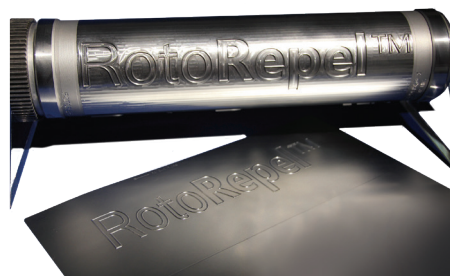
### Anvils

**Adjustable Anvils** can be adjusted up/down in parallel or independently to change the cutting clearance. The infinite adjustability allows better control of the cut depth and allows the operator to easily adjust for any variability. Available with D2 bearers and body for enhanced durability.

### Anti-Adhesive Coating

**RotoRepel™** proprietary adhesive control coating also enhances overall press performance for operators, including:

- Industry's #1 non-stick treatment
- Presses run faster
- Less press down time
- Reduction in static
- Easier die cleaning and storage
- Fewer missing labels
- Reduction in blocking at rewind
- Now available on Idler Rolls



### Support Tooling

- Gears
- Specialty Flexible Dies for Folding Carton Applications
- Pressure Gauges
- Rotary Pressure Cutting
- Die Blocks





A MAXCESS® BRAND

## The Industry Leader Who Invented the Web Guide

### Guiding

From the thinnest plastic film to the thickest steel strip, from the narrowest webs to the widest rolls, Fife delivers a full line of advanced guiding systems and products to reduce downtime and increase throughput.

### Metals/Strip

Off-tracking problems can force slower line speeds and cause damage to your equipment, roll coverings and even the strip itself. Fife offers a full range of rugged, yet precise products designed to handle the extreme demands of strip guiding.

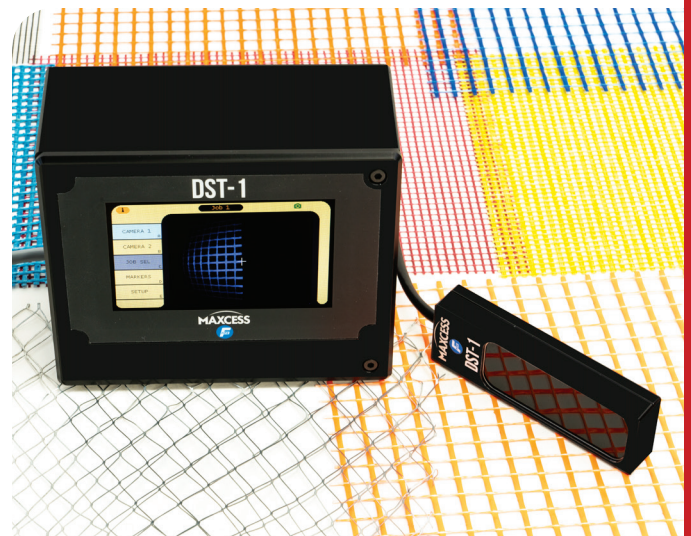


#### Guiding

- Pre-wired, fully integrated Web Guiding Systems
- Web Guide Controllers
- Power Units
- Sensors
- Actuators
- Positioners
- Offset Pivot Guides
- Steering Guides
- Unwind/Rewind Guides

#### Metals

- Strip Guiding Systems
- Furnace Guides
- Hole Detection
- Capacitive Sensing
- Inductive Sensing





A MAXCESS® BRAND

## The Industry Leader Who Invented the First Air Shaft

### Slitting

Tidland is the leader in slitting technology, offering advanced products and systems to fit virtually every application. From a single knifeholder to a fully automatic system, we deliver innovative slitting solutions designed to meet ever-increasing standards of quality, while helping you enter new, untapped markets.

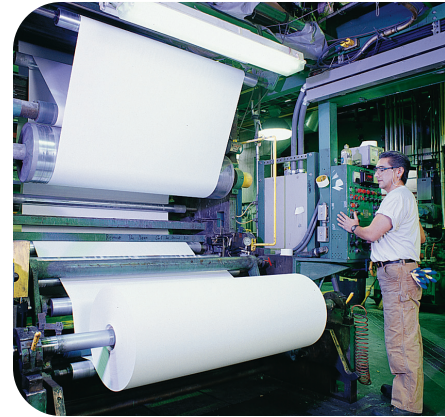
#### Slitting Products

- Electronic and Pneumatic Knifeholders
- Slitter Positioning Systems
- Fully Automated Shear Slitting Systems
- Mechanically Linked Slitting Systems



### Winding

Our extensive line of shafts and chucks for unwind or rewind applications is unparalleled. And with more than 65 years of winding experience, our knowledge and expertise is unmatched.



#### Winding Products

- Core Shafts -
  - Unwind and Rewind
  - Ergonomic
  - Differential
- Mill-Duty Air Shafts
- Great Expansion Shafts
- Narrow Web Shafts and Core Holders
- Pneumatic Brakes
- Safety Chucks
- Core Chucks
- Shaftless Chucks
- Crushed Core Restorers
- Industry 4.0 PressureMax Air Pressure Monitoring System



## 100% Inspection. Find Defects Before They Become Costly

### VisionMax and VisionConnect 100% Inspection

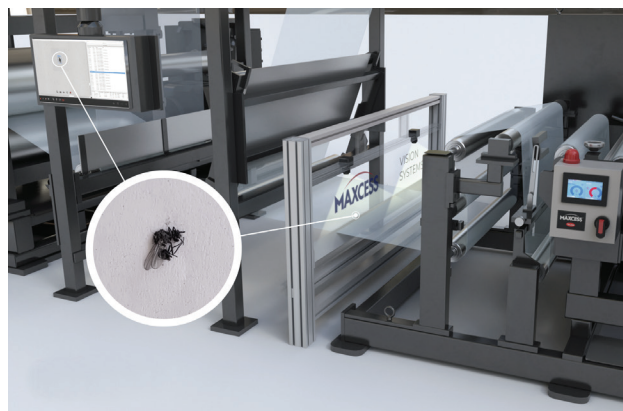
New Vision Systems from Maxcess help your converting line run better, faster and smarter

**Better-** no more returns and rework

**Faster-** reduce downtime and waste

**Smarter-** run faster while improving productivity through automated smart-converting

- Self-learning algorithms that automates setup
- Print and surface inspection from ONE system
- Easy-to-use software to store and recall jobs
- **VisionConnect** is an advanced workflow automation software suite, which allows operators to automatically control process lines and slitters to physically remove defects with as little waste as possible.
- A wide variety of custom options



## MAGPOWR

A MAXCESS BRAND

## The Most Installed Tension Control Systems Worldwide



### Tension Control

From our simplest sensor to our most advanced digital controls, MAGPOWR products are the result of hard-earned experience and unmatched application expertise.

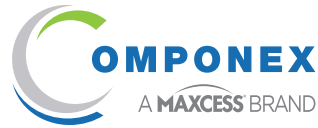
Our commitment to delivering the best possible control solution for your application is a big reason why MAGPOWR has the largest installed base of tension control systems in the industry. Whether you're converting or printing, working with paper, film or wire, MAGPOWR provides the tools you need to get the job done right.

#### Products

- Load Cells
- Load Cell Tension Controllers
- Tension Readouts
- Dancer Controllers
- Diameter-Based controllers
- Magnetic Particle Clutches and Brakes
- Pneumatic Brakes
- Permanent Magnet Brakes and Clutches
- Tension Sensing Idler Rolls







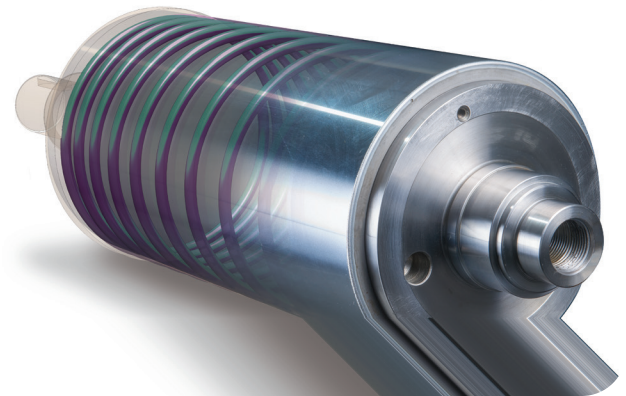
## Up To Same Day Production Precision Rolls

### Webex Heat Transfer and Vacuum Rolls

Webex has compiled a wide range of design options to manufacture the most efficient Heat Transfer and Chill Rolls. Our engineers evaluate roll size, internal geometry and fluid dynamics to develop the most efficient roll for each application.

In addition, we offer customized Vacuum rolls that offer:

- Vacuum zone angles configured to match the web wrap
- Adjustable vacuum zones for varying web widths
- Flame spray coatings for release and traction
- Clean room and cantilevered designs
- A wide variety of custom options



### WINertia™ Idler Rolls by Componex

#### 5 Day Delivery! The fastest lead time in the industry

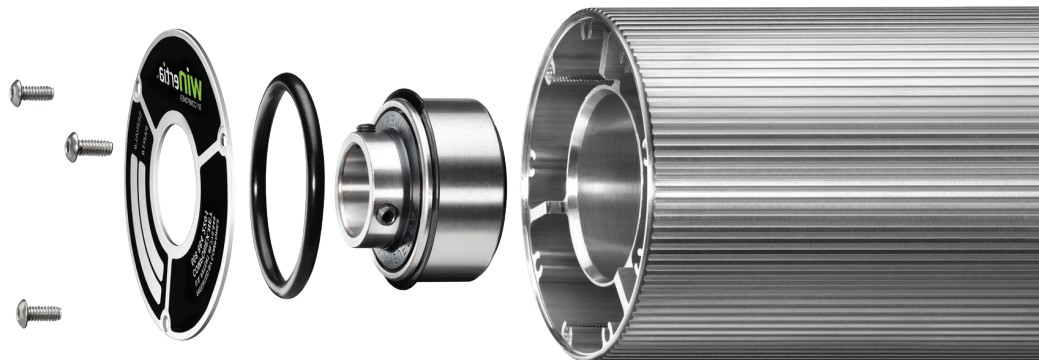
The Componex Dead Shaft Idlers (smooth and air vent "AV") include built-in "air vents"- lateral grooves that remove trapped air. This maintains constant web traction at speeds up to 3400 FPM and prevents web scratching, slipping and sliding, allowing you to run up to 7.5 times faster.

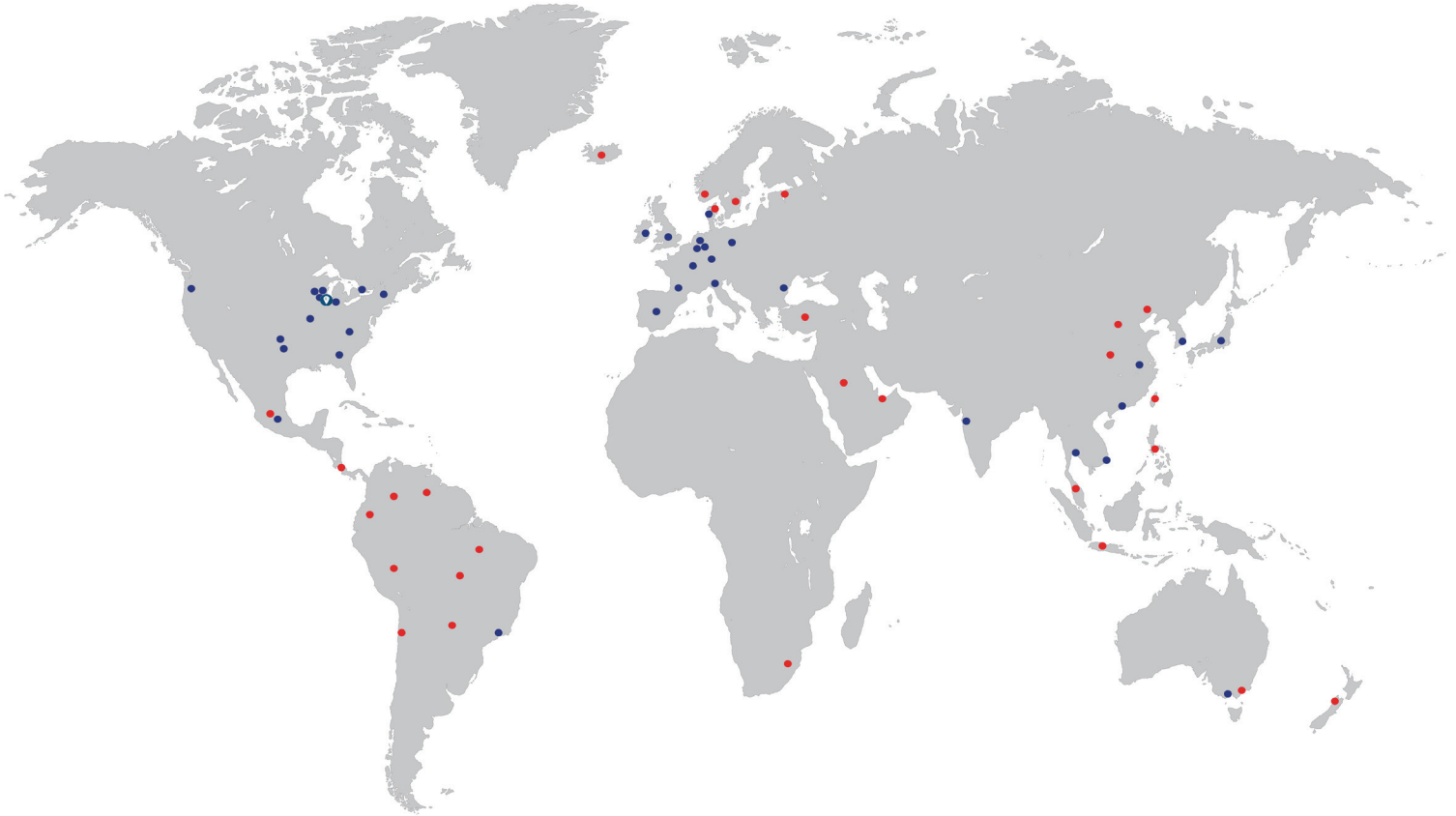
### Valley Roller Rubber Covered Rolls

We have been designing, manufacturing, repairing and creating custom rubber compounds for a wide range of applications since 1984. Through our integrated approach to customer service and manufacturing, we provide the highest level of service, accuracy and quality control for every order.

#### Precision Roll Products

- Heat Transfer Rolls
- Vacuum Rolls
- Bowed Rolls
- Live Shaft and Dead Shaft Idler Rolls
- Paper Rolls
- Carbon Fiber Rolls
- Loaded Rolls for Calendering, Embossing, Laminating and Casting
- Custom Coatings, including RotoRepel





- Manufacturing and Maxcess Representatives
- Sales and Service Agents



#### GLOBAL HEADQUARTERS & AMERICAS

**P** +1-844-MAXCESS  
**F** +1-405-755-8425  
sales@maxcessintl.com  
maxcess.com

#### EUROPE HEADQUARTERS

**P** +49-6195-7002-0  
sales@maxcess.eu  
maxcess.com

#### ASIA PACIFIC

**P** +86-400-830-1898  
asia.sales@maxcessintl.com  
maxcess.com

